

Scan For
More Information!



Instant Brands LLC
3025 Highland Parkway, Suite 700,
Downers Grove, Illinois 60515, USA

© 2022 Instant Brands LLC

get started

Foldable Multicooker
Instruction Manual

Instant™

Table of Content

Table of Content	P1
Safety Precaution	P2
Product Specifications	P3
Operating Instructions	P4-7
Safety Installations & Emergency Measures	P8
Cleaning and Maintenance	P9
Troubleshooting	P10-12
Electric Schematic Diagram	P13
Warranty	P14
Emergency Measures	P14

Safety Precautions

01. Please read this manual carefully to ensure proper usage, maintenance, and installation. Please safekeep this manual with the warranty card included within.
02. This appliance is for household use only. It is not intended for outdoor usage.
03. Do not knock or shake the appliance when in use.
04. Do not power on the appliance without the cookware or grill pan in place.
05. Keep children at a safe distance when using the appliance. Do not allow children to operate the product.
06. The accessible surfaces of the appliance will be hot while in use. Please do not touch the glass ceramic heating surface, heating plate or other heat radiating parts. Please wear heat resistant cooking gloves when changing the grill pan to prevent scalding.
07. To prevent damage, do not place heavy objects of more than 12kg on the appliance. Do not place the power cord on any hot surfaces of the appliance. Do not place the cord over the edge of tables, countertops and hot surfaces.
08. Do not place the appliance near water heaters, convection and microwave ovens, or other heat sources.
09. To avoid risk of electrical shock, please ensure that the plug is completely dry before using. Avoid immersing the power cord or plug in water.
10. To avoid risk of electrical shock, do not insert metal wires or foreign objects into the air vents. Do not clean the appliance with wire brushes and avoid contact with electrical components.
11. To avoid blockage of air vents and affect the dissipation of heat, do not place the appliance on carpets or fabric surfaces when in use. Always allow a space of at least 10cm on all sides of the appliance to allow adequate circulation of air.
12. To avoid the risk of fire, do not place any inflammable materials (e.g., curtains, wallpapers) near the appliance when in use.
13. Clean the bottom of the cookware or grill pan thoroughly before use to prevent fire caused by burning of foreign substances.
14. To avoid the risk of fire, do not place paper or other materials on the glass-ceramic heating surface/heating element when using the appliance.
15. When the appliance is in operation, do not leave it unattended for a prolonged period. If unable to supervise usage, switch off the appliance to prevent it from being boiled dry, causing damage to the product.
16. To avoid the risk of injury because of thermal expansions, remove the lids of canned food before heating them in the pot.
17. This appliance does not come with a timer or remote-control system. Do not connect this appliance to an external timer switch or separate remote-control system.
18. When not in use, remove the power plug from the socket. Allow the appliance to cool completely before cleaning or storing. Clean the oil tray thoroughly and ensure it is free of residual fluids before storing.
19. When used continuously in high heat mode, the appliance may switch to intermittent heating mode, power reduction mode, or suspend heating. This is a normal occurrence to optimise energy usage by cooking on residual heat.
20. Do not move the appliance during heating. To avoid potential safety hazards, only move the appliance when it is unplugged and completely cooled down.
21. Always switch off the appliance after cooking. If the high temperature indicator light is on, it is recommended to unplug the appliance after the fan stops turning.
22. Contact the After-sales Service Centre should you encounter problems with the appliance. As a safety precautionary measure, do not attempt to disassemble and repair the appliance yourself.
23. When the temperature of the heating surfaces becomes exceedingly high, the appliance will switch automatically to operate at a lower heat.

Product Specification



Model	IB-FMC/BK, IB-FMC/WH	Colour	Black/White
Rated Voltage	220V~240V	Rated Frequency	50Hz~60Hz
Rated Power	2200W(1500W+700W)	Net Weight	3.7Kg
Grilled Pan Dimension	213*213*23mm	Product Dimension	303*290*145mm
Power Cord Length	1.2m	Place of Manufacture	Guangdong, Foshan
Applicable Standard: IEC 60335-1:2010, IEC 60335-1:2010/AMD1:2013, IEC 60335-1:2010/AMD2:2016, IEC 60335-2-9:2019			

Operating Instructions



1. Upon unpacking, clean all components with a soft cloth and mild dish soap.
2. Do not immerse the appliance in water. Clean the exterior with a soft cloth.
3. Wipe down all components and let all surfaces dry thoroughly before use.



Check and ensure no foreign substances between the base unit and cookware/grill pan before connecting it to the power supply. Do not stack and use the cookware and grill pan together.

1. Ensure no foreign substances or fluid between grill pan/cookware and the base unit.
2. Ensure the placement of the grill pan/cookware is levelled and not slanted.
3. Avoid using metal utensils like knife, spatula, etc. which may damage the coating of the grill pan.



Place the base unit on a flat and stable surface, ensuring minimum space of 10cm around the perimeter to allow for adequate air circulation.



Power connection : Ensure that the plug connects firmly to the electrical inlet of the appliance. Connect the plug to the wall socket.

Operating Instructions



1. Place the cookware at the centre of the high-heat cooker before adding cooking ingredients into the cookware.
2. When the appliance is on standby mode, “-” will be indicated on the control panel. Turn the knob in clockwise direction to temperature setting selection mode. Press the ‘IMD’ control panel in the centre to set the appliance in operation mode (numeric display is lighted up).
3. Caution: Do not heat up the appliance when the pot is empty
In a clockwise direction, turn the knob to select Mode 6. Press the control panel in the centre. The numeric display will blink for 3 seconds before returning to standby mode, displaying “-” on the panel.



Cooling fan will be activated as the appliance heats up.



After cooking is completed, press the control panel at the centre to return to standby mode.
The cooling fan will continue to run for another two minutes to dissipate the heat. After the fan stops, switch off and unplug the appliance before cleaning and storing it away.

Choice of Cookware

The glass-ceramic heating surface is compatible with most heat resistant cookware made of metal aluminium, copper, ceramic, claypot and Visions cookware. Saucepan or non-reflective cookware is recommended for efficient heat transfer.



Ceramic Pot



Visions Pot



Tempura Pot



Aluminium Kettle



Stainless Steel Pot



Hot Plate



Cast Iron Pot



Cast Iron Saucepan



Enamel Pot

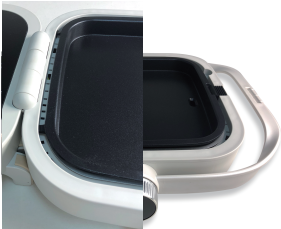


Cast Iron Enamel
Tea Pot

Caution

1. Do not use pressure cooking appliances to avoid high-pressure heat explosions.
2. Limited to pot with diameter between 18cm to 26cm.
Cookware and utensils should be placed centrally within the operating zone.
3. The appliance will automatically operate at lower temperatures when heated with an empty pot, or when the temperature exceeds operating limit.

Operating Instructions for Grill Section



Align the grilling pan to the base unit of the grill section by opening the catch on the right and lowering down the pan to snap it in place.

Caution: Do not heat up the appliance with an empty grill pan.



The cooling fan will be activated as the appliance heats up. Press the control panel at the centre to return to standby mode. The cooling fan will continue to run for another two minutes to dissipate the heat. After the fan stops, switch off and unplug the appliance before cleaning and storing it away.



1. When the appliance is on standby mode, “-” will be indicated on the control panel.
2. Turn the knob in clockwise direction to temperature setting mode.
3. Press the control panel in the centre to set the appliance in operation mode. In a clockwise direction, turn the knob to select Mode 6. Press the control panel in the centre. The numeric display will blink for 3 seconds before returning to standby mode, displaying “-” on the panel.



Caution: Allow the grill pan to cool completely after use. Empty and clean the oil tray thoroughly to avoid oil seepage during storage, which may damage the appliance.

Caution

1. Use only the grill pan that comes with the appliance.
2. Before storage, ensure that the oil tray is cleaned thoroughly with no residual oil.
3. The appliance will switch automatically to intermittent heating mode when it detects an empty grill pan or when the temperature exceeds operating limit.

Emergency Measures

In the event of product malfunction during usage, please switch off the power supply and unplug the appliance. Contact the after-sales service centre for assistance.

Safety Installations

Temperature control: The heating plate is equipped with a sensor to monitor temperature within the appliance and relays it to the IMD control device. When the device detects high temperatures, it will automatically lower or cut off power supply.

High temperature warning: Stop usage of the appliance. Do not touch the heating area. Do not move the appliance.

Temperature Setting Reference

Mode	High Heat Cooker	Grill Pan
Mode 1	180~230°C	90~130°C
Mode 2	330~380°C	120~160°C
Mode 3	400~450°C	150~190°C
Mode 4	450~500°C	180~220°C
Mode 5	500~550°C	210~250°C
Mode 6	550~600°C	230~270°C

Cleaning and Maintenance



Removing the grill pan from base unit. Release the catch and lift the grill pan.



Cleaning the grill pan
After removing the grill pan from the base unit, clean it in water with a soft cloth.



Removing the oil tray
Place the appliance on a flat surface, release the catch and remove the oil tray.



Cleaning the high-heat cooker's glass-ceramic heating surface.
Wipe the surface with a soft, damp cloth.

Caution

1. Clean away any dirt or food stain on the glass-ceramic heating surface and grill pan with a soft, damp cloth. To remove oil stains, add a small amount of toothpaste to the soft, damp cloth and wipe off. Alternatively, gently clean it with mild dish soap before wiping off. Do not use abrasive brushes to scrub the appliance.
2. Dust off the grill filter with a cotton swab. Apply mild dish soap with a toothbrush to gently remove oil stains on the exterior.
3. Do not rinse or immerse the base unit in water. Do not open or dismantle the base unit for cleaning.
4. Always keep the appliance clean. Wrap it in a plastic bag or keep it in a box when not in use. This is to prevent pests from entering the appliance, causing damage to the parts.
5. Keep the bottom of the cookware and grill pan clean. Wash and dry thoroughly before use to prevent staining the glass-ceramic heating surface and heating element.
6. The glass-ceramic heating surface will turn yellowish after some time. This is a normal occurrence and will not affect its operating effectiveness.
7. Perform regular checks on the appliance. Ensure the power cord and plug are in good working condition. If you encounter problems with the appliance or the power plug is damaged, do not attempt to open the appliance to repair, or replace any parts that are not in compliance with specifications. Please contact the after-sales service centre for assistance.

Troubleshooting

Problem	Cause	Solution
Oil leakage when appliance is folded	<ol style="list-style-type: none"> 1. Oil stain on the surface of the appliance has not been cleaned properly 2. Oil tray not emptied and cleaned thoroughly 	<ol style="list-style-type: none"> 1. Wipe away the oil stain from the surface of the appliance 2. Empty the oil tray and clean it before replacing it
Grill section is not working	Grill pan is not fitted securely in the base unit slot	Place the grill pan on the slot, press it down gently till it is snapped in place.
Appliance cannot stand in an upright position after folding	Carry handle is loosened	Tighten the carry handle

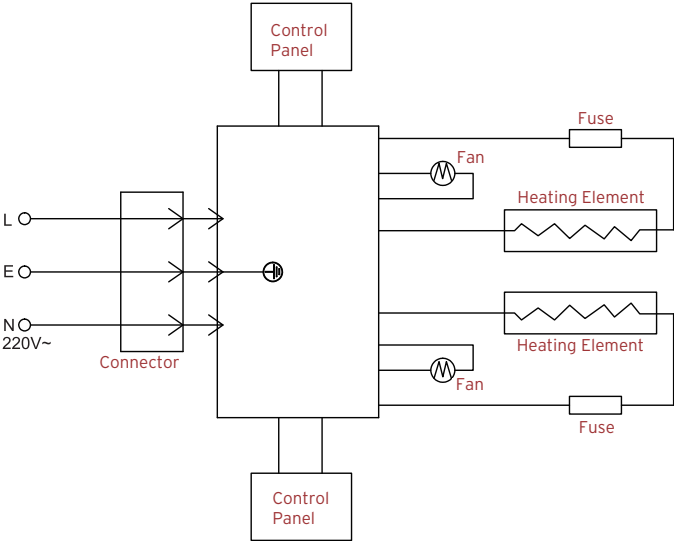
Troubleshooting

Problem	Cause	Solution
Display panel failure	<ol style="list-style-type: none"> 1. Appliance is switched off 2. Circuit board is not connected 3. Power outage 	<ol style="list-style-type: none"> 1. Turn the knob in clockwise direction to switch on the appliance 2. Check if the appliance is connected to the power cord 3. Wait for the resumption of power supply
Heating surface failure	<ol style="list-style-type: none"> 1. Appliance has reached the temperature limit 2. Circuit board is faulty 3. Cable is not connected 	Heating will resume when temperature changes Contact the after-sales service centre for assistance
Too much oil in the grill pan	<ol style="list-style-type: none"> 1. Appliance has reached the temperature limit 2. Circuit board is faulty 3. Cable is not connected 	<ol style="list-style-type: none"> 1. Remove debris causing the blockage 2. Empty the oil tray and clean it before placing it back
Continuous beeping	<ol style="list-style-type: none"> 1. Circuit voltage too high or too low 2. Faulty Sensor 3. Temperature too high 4. Temperature of the cooktop is too high 	<ol style="list-style-type: none"> 1. Effective voltage at 220-240V. 2. Contact the after-sales service centre for assistance 3. Check if the cooling fan is working 4. Resume power supply after the temperature lowers
Appliance cannot be folded	Food residue or other objects left on the surface of the appliance	Clean the appliance before folding
Cooling fan continues to run after the appliance is switched off	The cooling fan will continue to run for two minutes to dissipate the heat and will stop when the cooktop is less than 50°C	The cooling fan will stop running after 2 minutes.

Food-handling Information

The unit and food contact materials all comply with food safety standard		
Components	Material	Applicable Standard
Coating	Polytetrafluoroe hylene coating	EU 10/2011, EU 2020/1245
Reminder : Different models use different materials, please refer back to your unit to see the model materials		
Operation Condition: Please avoid contact of strong acid substances with the stainless-steel parts		

Electrical Schematic Diagram



Warranty

In case of problems with the appliance, please contact after-sales service centre for assistance.
The Instant Pot Foldable Multi-cooker has a one-year warranty period.
Warranty does not cover parts and accessories that are not part of the appliance; packaging; and external defects.
Warranty starts on the day of receipt of the appliance by the consumer.
In the event of failure to provide proof of receipt date, the start date shall be based on the date of issuance of the warranty certificate.

Emergency Measures

- 1. Damage caused during freight, defects arising from improper installation or storage by the user;
- 2. Defects arising from dismantling and/or repairing of the appliance by the user;
- 3. Defects arising from operation not in accordance with instructions and warnings provided in the manual;
- 4. Inability to provide proof of purchase;
- 5. Defects arising from accidents and disaster, eg. Flood, fire, lighting, explosion, unstable power supply, etc.;
- 6. Beyond warranty period.

<div>InstantTM Quality Certification</div>		
QA:	Date of Inspection:	Date of Production:
<div>Applicable Standard: IEC 60335-1:2010, IEC 60335-1:2010/AMD1:2013, IEC 60335-1:2010/AMD2:2016, IEC 60335-2-9:2019</div>		
<div>This product has been tested and meets the requirement of technical conditions</div>		